

SOPs4RI



Research integrity education

Guidelines for Research Institutions



Any differences between target groups are indicated using the symbols:



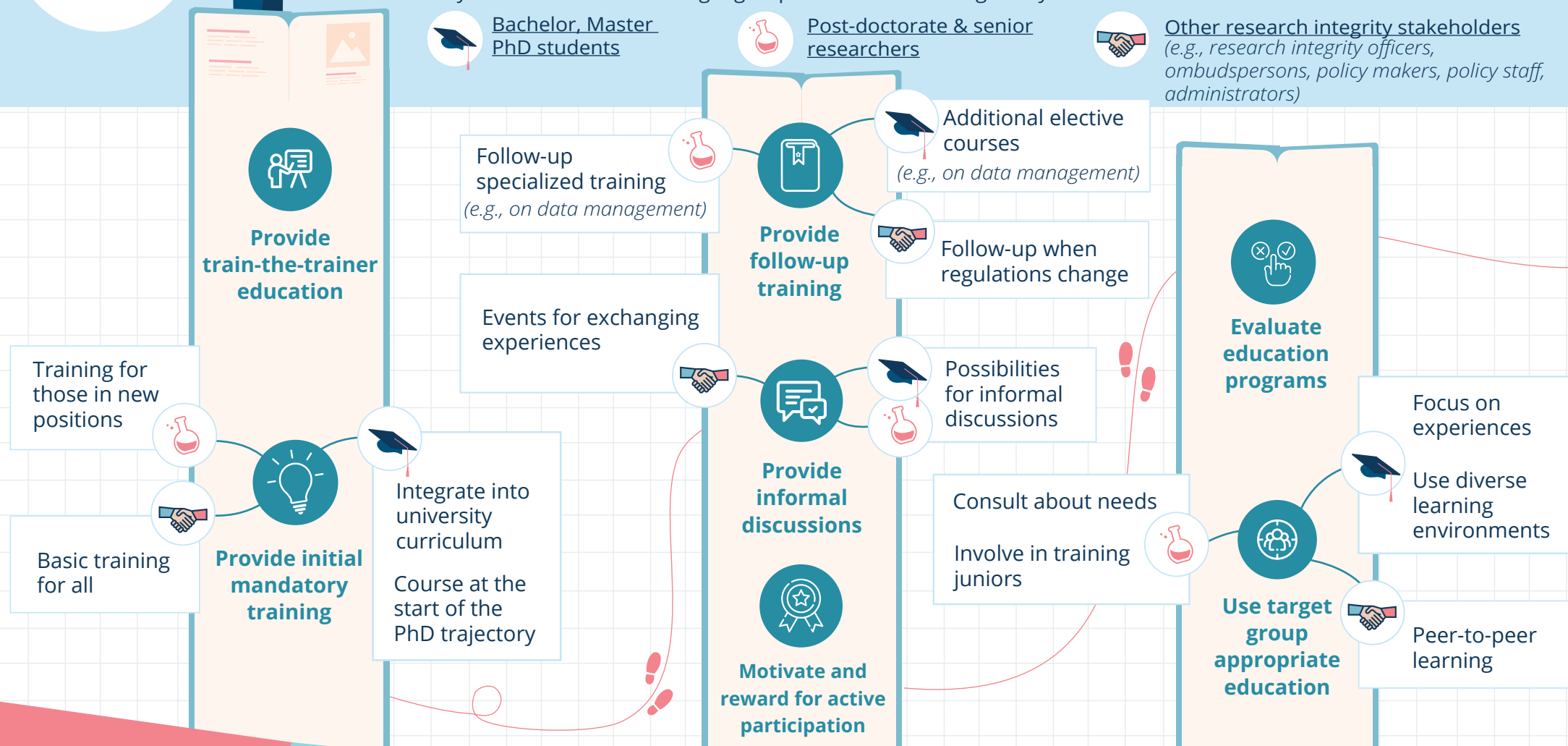
Bachelor, Master
PhD students



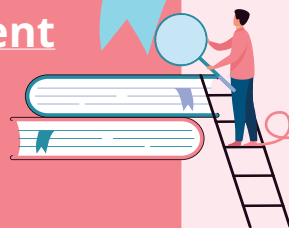
Post-doctorate & senior
researchers



Other research integrity stakeholders
(e.g., research integrity officers,
ombudspersons, policy makers, policy staff,
administrators)



**To implement
continuous
education**



Provide educational
resources



Provide advice on day-to-day questions



Show institutional
commitment



Foster responsible supervision
and leadership



Build a responsible
research environment